



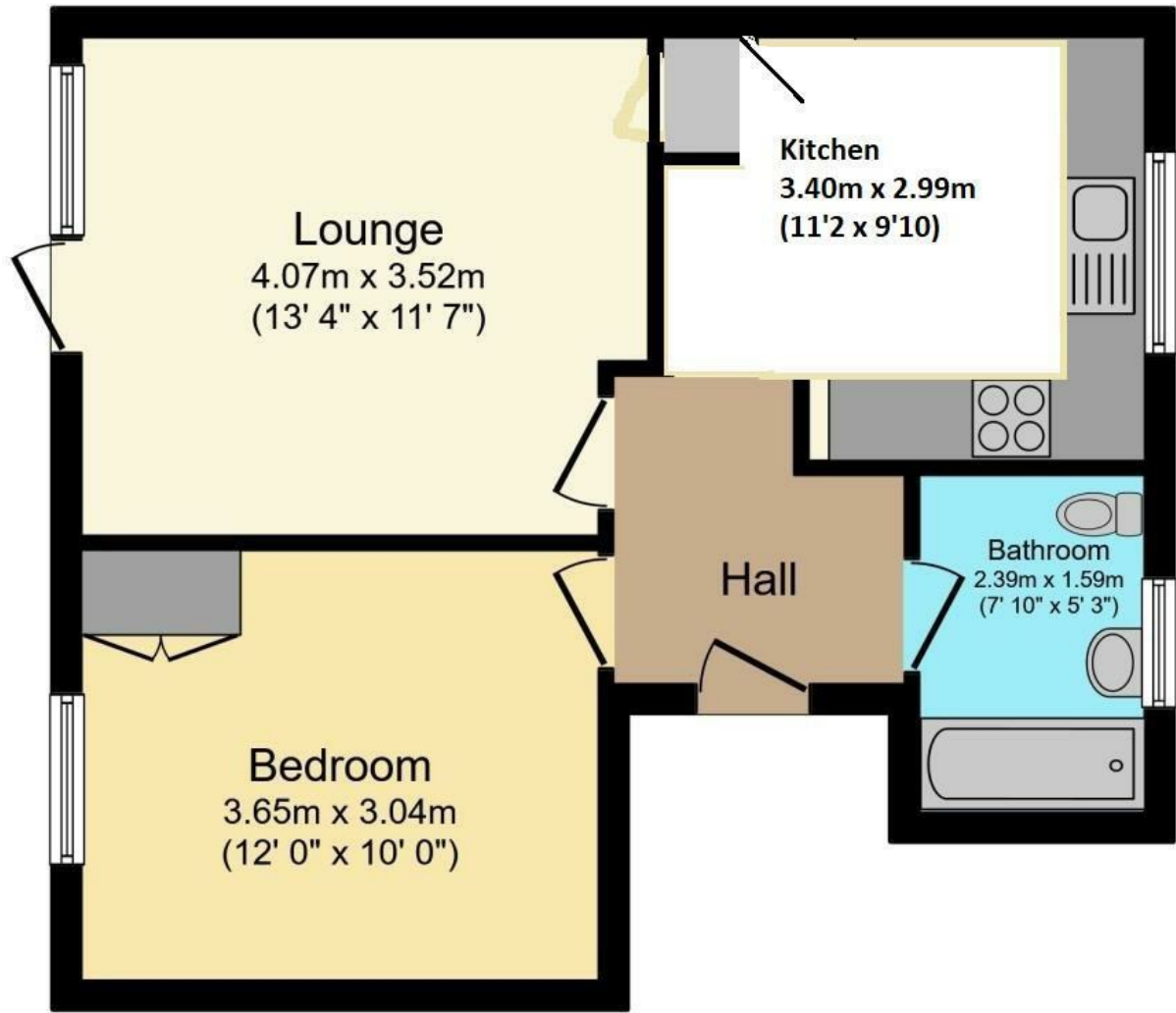
4 Wantage House Kings Lynn Drive, Romford, Essex, RM3 8BZ

1 DOUBLE BEDROOM**PRIVATE BALCONY**REFURBISHED TO A HIGH STANDARD THROUGHOUT**CLOSE TO AMENITIES** COUNCIL TAX BAND A
GUIDE PRICE £220,000 - £230,000

Fantastic one bedroom flat offered for sale in the sought after town of Romford. Enjoy the best of both worlds as Kings Lynn Drive is a busy residential area situated just a short distance from many amenities, but you can also enjoy interacting with the herd of deer who pay a visit every day to the communal green areas! Internally this property has been refurbished to a high standard where attention to detail has not gone un-noticed. In the lounge, a feature wall has been created to give home to a recessed TV and fireplace. A cleverly installed fitted cupboard adds extra storage and there is a private balcony over looking the communal green areas. The good size kitchen is well equipped with plenty of cupboard space and room to dine. There is also a double bedroom with fitted wardrobes, a bathroom with hydro massage whirlpool bath and CCTV in the hallway to remain. The property has been rewired by the current owners and a central heating system via a Vaillant boiler has been recently installed. There is plenty of parking for the residents and guests and we strongly advise you book an internal viewing now! Long lease 184 years remaining. £10 per year ground rent and £74 per month service charge.

- 1 DOUBLE BEDROOM
- FITTED KITCHEN
- LONG LEASE
- BATHROOM
- LOUNGE
- BALCONY
- COMMUNAL GARDEN
- COUNCIL TAX BAND A
- REFURBISHED

£220,000



Floor Plan

Total floor area 43.0 sq. m. (463 sq. ft.) approx

